



FOCAL POINT HOMES

ELAINA II

55'-6" wide x 44'-0" deep
6 BR 5-1/2 BA

FLOOR AREA

First Floor	1837 S.F.
Second Floor	2280 S.F.
Above Grade Finished	4117 S.F.
Finished Basement	1343 S.F.
Total Finished Space	5460 S.F.
Opt. Fitness Room	198 S.F.
Opt. Media Room	218 S.F.
Total Finishable Area	5876 S.F.

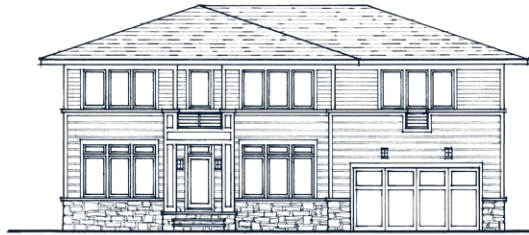
Specification and plans are provided for illustrative purposes only and are subject to change, modification and/or substitution without notice.

April 10, 2026



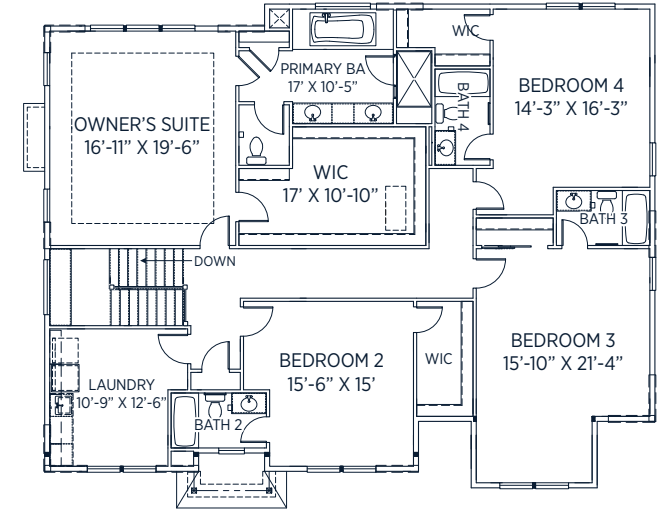
ELEVATION A
Ceilings heights: 9' / 10' / 9'

Optional side entry garage available

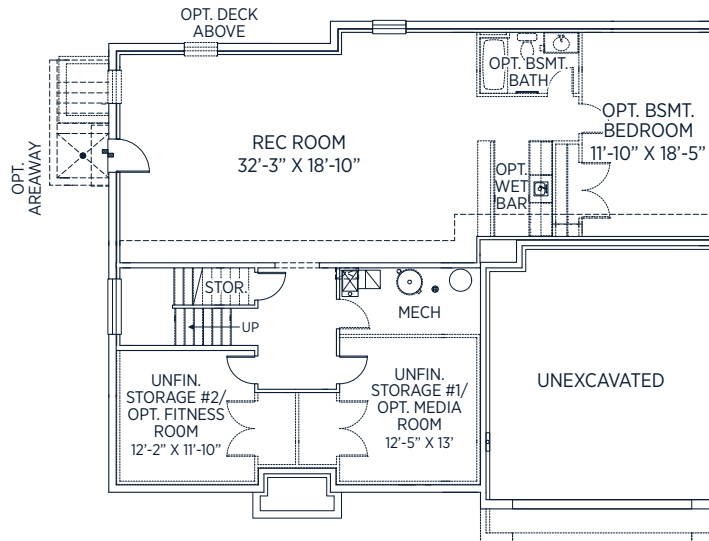


ELEVATION B
Ceilings heights: 9' / 10' / 9'

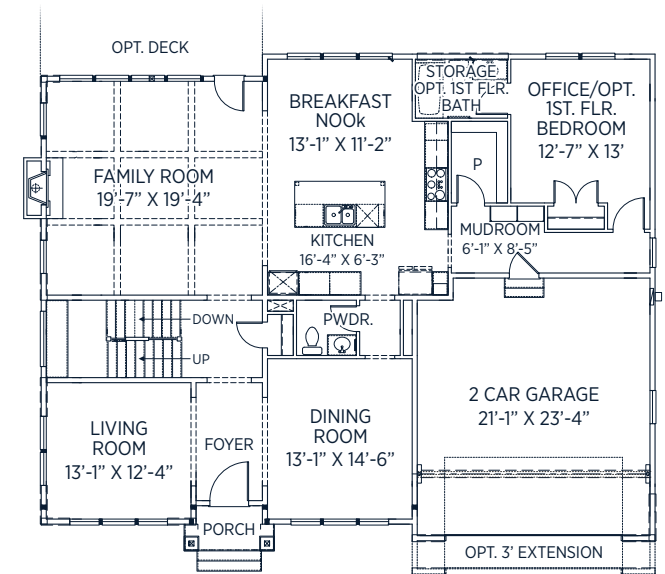
Optional side entry garage available



SECOND FLOOR PLAN



BASEMENT FLOOR PLAN



FIRST FLOOR PLAN