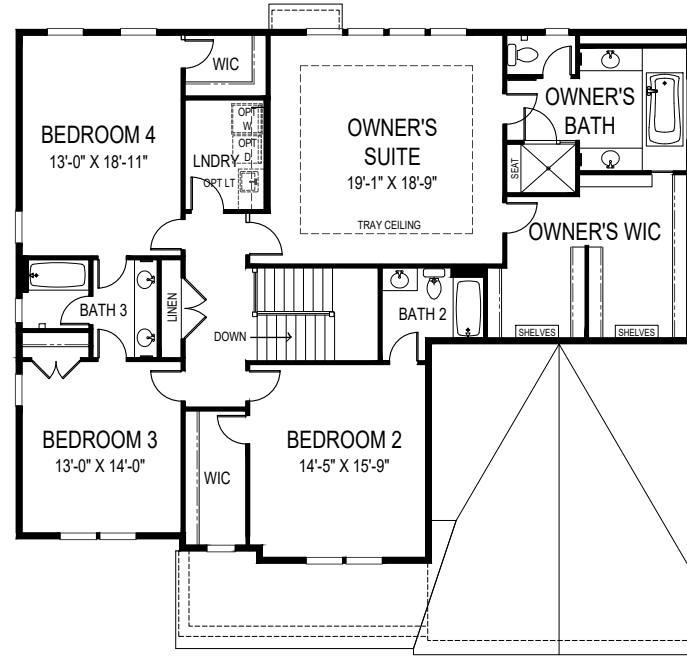


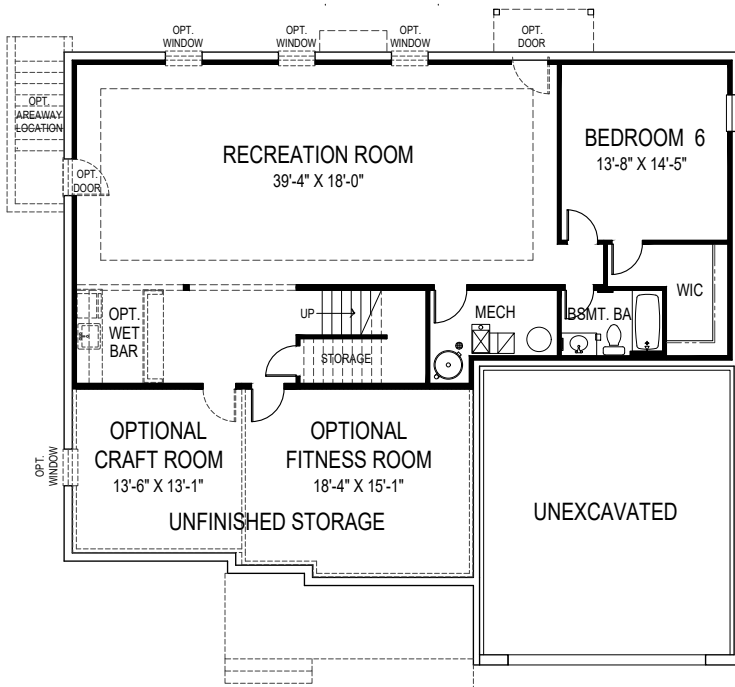


CEILING HEIGHTS: STANDARD 9'/10'/9"

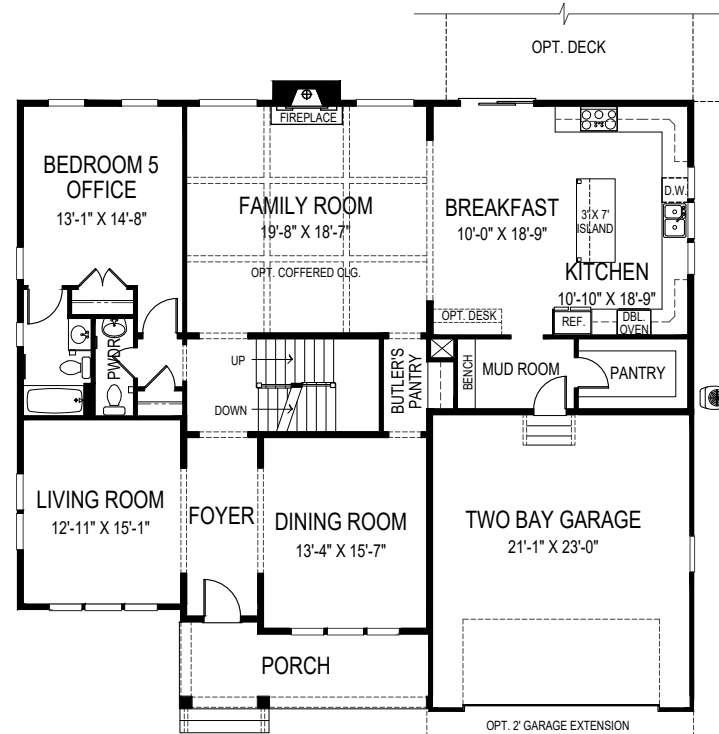
OPTIONAL SIDE ENTRY GARAGE AVAILABLE



SECOND FLOOR PLAN



BASEMENT PLAN



FIRST FLOOR PLAN



**FOCAL POINT
HOMES**

REEVES II

55'-4" wide x 50'-2" deep
6 BR 5 1/2 BA

FLOOR AREA

FIRST FLOOR	2008 S.F.
SECOND FLOOR	1999 S.F.
ABOVE GRADE FINISHED SPACE	4007 S.F.
FINISHED BASEMENT SPACE	1414 S.F.
TOTAL FINISHED SPACE	5421 S.F.
OPT. CRAFT ROOM	210 S.F.
OPT. FITNESS ROOM	303 S.F.
TOTAL FINISHABLE AREA	5954 S.F.

Specification and plans are provided for illustrative purposes only and are subject to change, modification and/or substitution without notice. January 24, 2025



EQUAL HOUSING
OPPORTUNITY