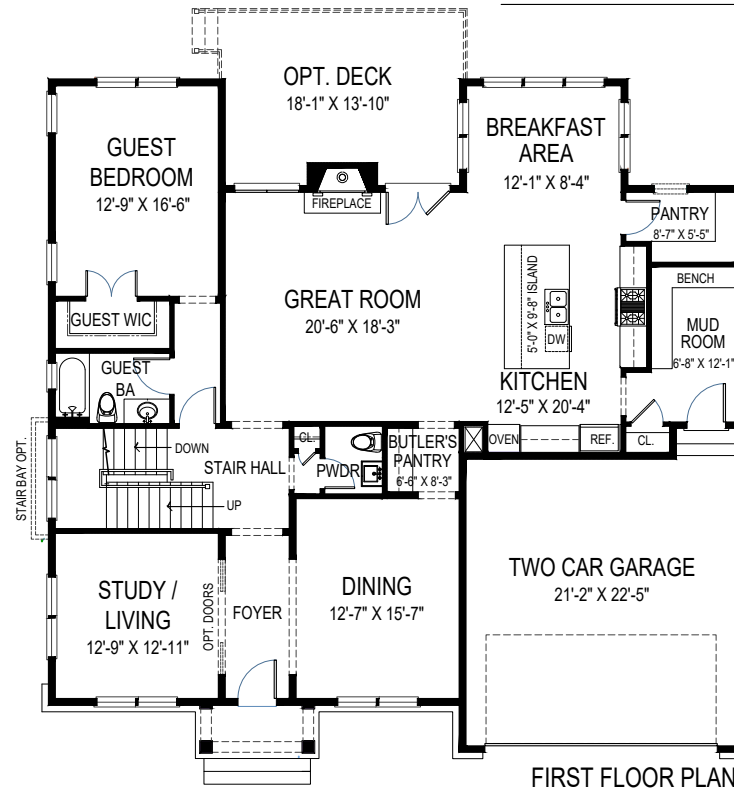
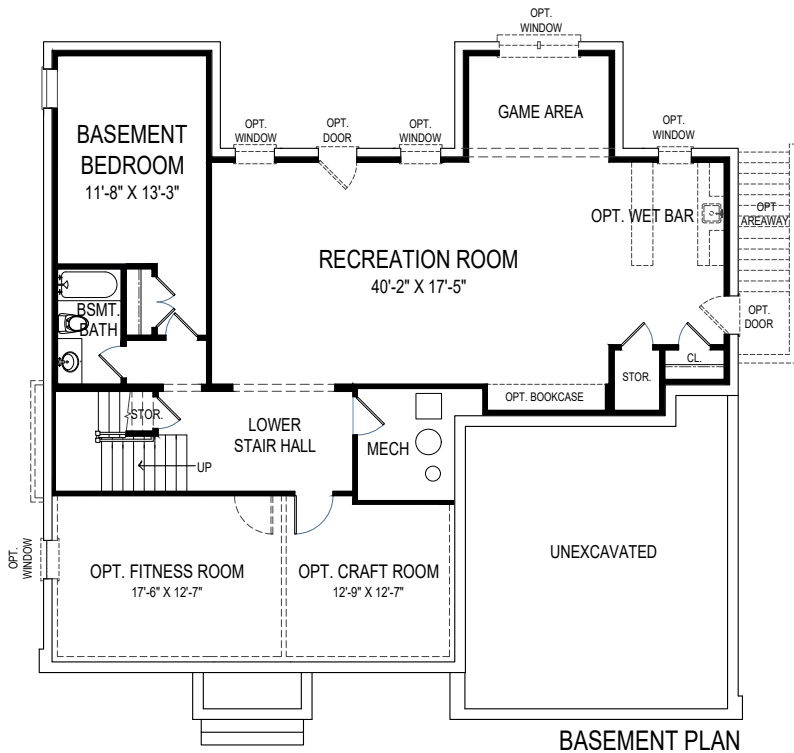
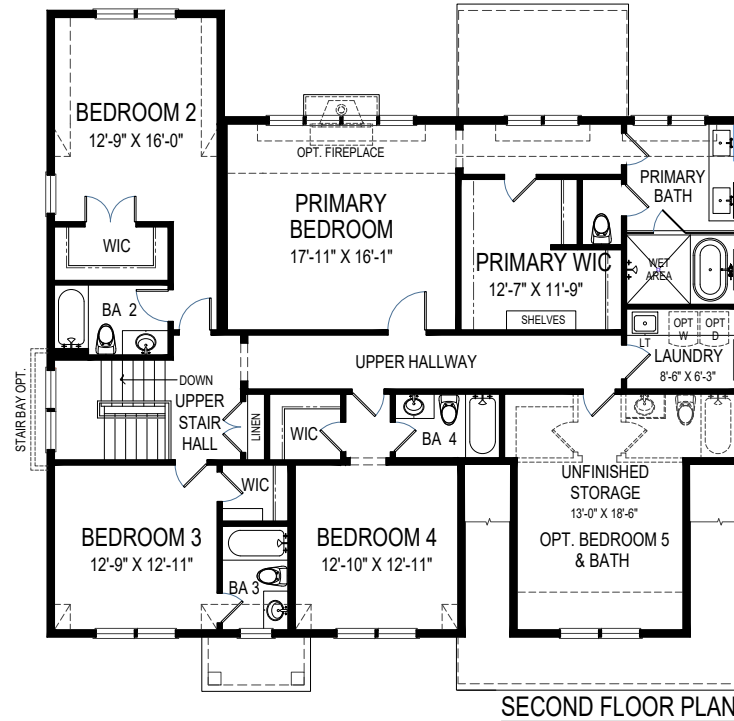




CEILING HEIGHTS: 9' / 10' / 9'



**FOCAL POINT  
HOMES**

# ADDISON

55'-0" wide x 53'-0" deep  
6 BR 6-1/2 BA

## FLOOR AREA

FIRST FLOOR	1953 S.F.
SECOND FLOOR	1979 S.F.
ABOVE GRADE FINISHED SPACE	3932 S.F.
FINISHED BASEMENT SPACE	1435 S.F.
TOTAL FINISHED SPACE	5367 S.F.
OPT. BEDROOM 5 / BATH 5	235 S.F.
OPT. FITNESS ROOM	235 S.F.
OPT. CRAFT ROOM	162 S.F.
OPT. STAIR BAY	27 S.F.
TOTAL FINISHABLE AREA	6026 S.F.

Specification and plans are provided for illustrative purposes only and are subject to change, modification and/or substitution without notice.  
January 27, 2025



EQUAL HOUSING  
OPPORTUNITY