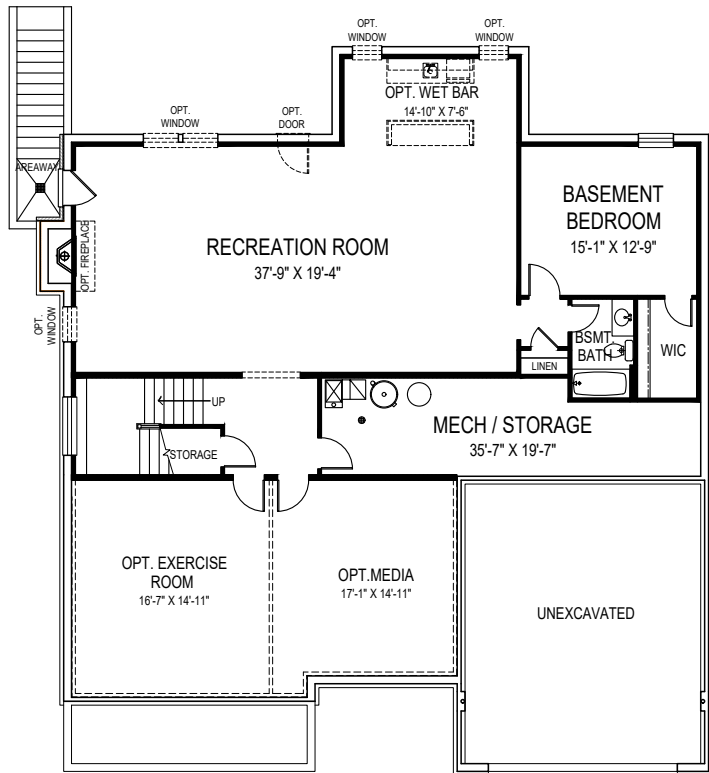


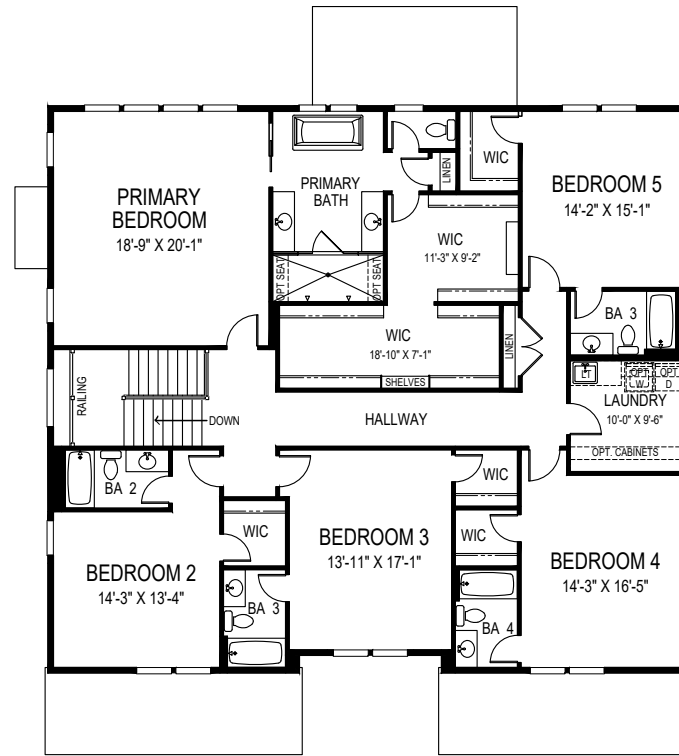


CEILING HEIGHTS: 9'10"/9'

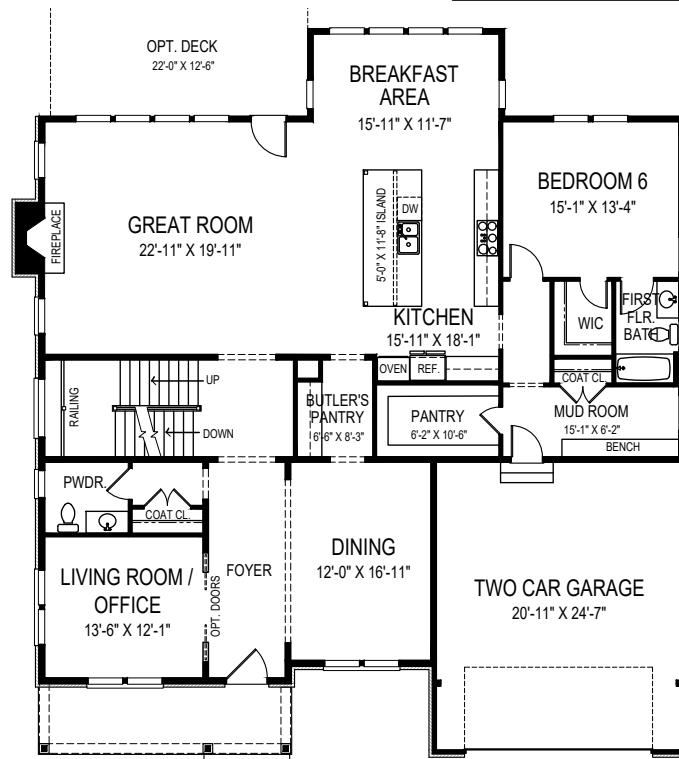
OPTIONAL SIDE ENTRY  
GARAGE AVAILABLE



**BASEMENT PLAN**



**SECOND FLOOR PLAN**



**FIRST FLOOR PLAN**



**FOCAL POINT  
HOMES**

# GRAYSON

55'-2" wide x 62'-0" deep  
7 BR 6-1/2 BA

## FLOOR AREA

FIRST FLOOR	2394 S.F.
SECOND FLOOR	2657 S.F.
ABOVE GRADE FINISHED SPACE	5051 S.F.
FINISHED BASEMENT SPACE	1493 S.F.
TOTAL FINISHED SPACE	6544 S.F.
OPT. EXERCISE ROOM	317 S.F.
OPT. MEDIA ROOM	273 S.F.
TOTAL FINISHABLE AREA	7134 S.F.

Specification and plans are provided for illustrative purposes only and are subject to change, modification and/or substitution without notice.  
October 15, 2024



EQUAL HOUSING  
OPPORTUNITY