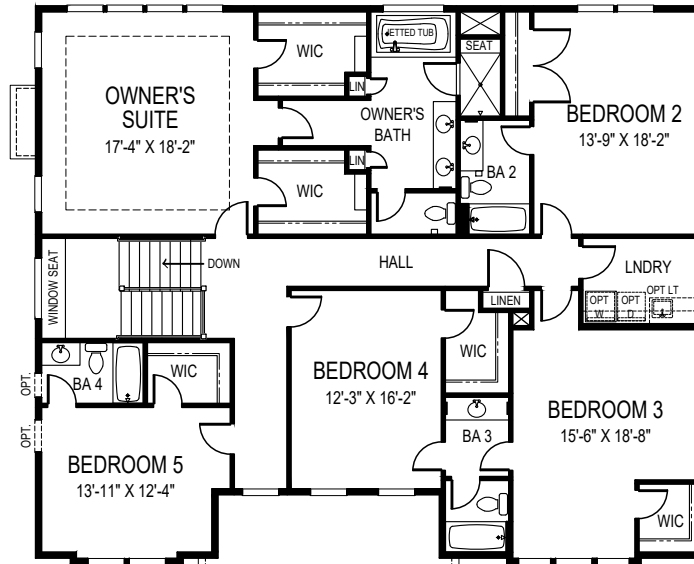


DORMER OPTIONAL

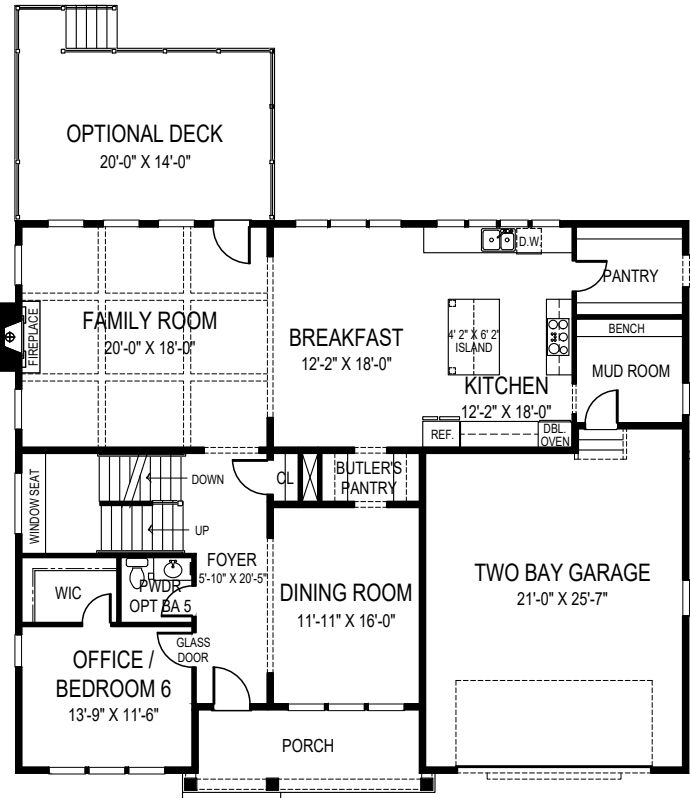


CEILING HEIGHTS: STANDARD 9'9"/8"
OPTIONAL 9'10"/9"

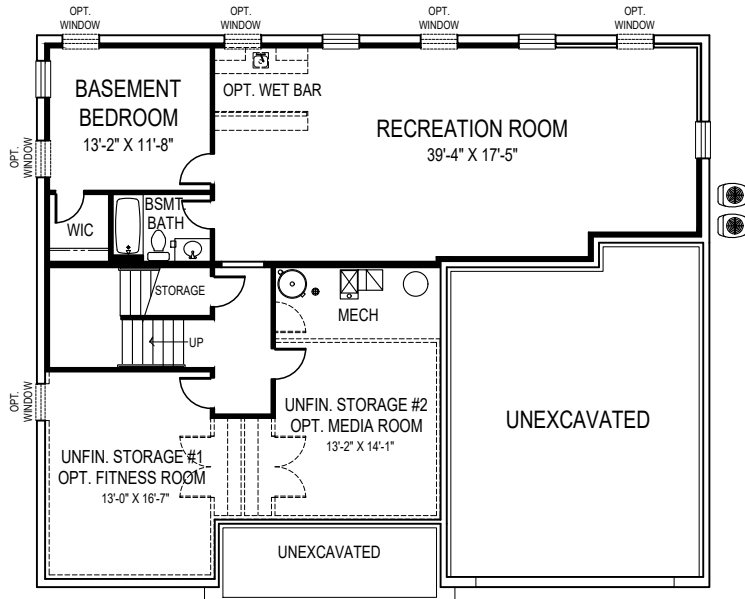
OPTIONAL SIDE ENTRY
GARAGE AVAILABLE



SECOND FLOOR PLAN



FIRST FLOOR PLAN



BASEMENT PLAN



**FOCAL POINT
HOMES**

WILLIAM

54'-10" wide x 46'-6" deep
6 BR 5 1/2 BA

FLOOR AREA

FIRST FLOOR	1803 S.F.
SECOND FLOOR	2384 S.F.
ABOVE GRADE FINISHED SPACE	4187 S.F.
FINISHED BASEMENT SPACE	1204 S.F.
TOTAL FINISHED SPACE	5391 S.F.
OPT. FITNESS ROOM	275 S.F.
OPT. MEDIA ROOM	234 S.F.
TOTAL FINISHABLE AREA	5900 S.F.

Specification and plans are provided for illustrative purposes only and are subject to change, modification and/or substitution without notice. April 8, 2024



EQUAL HOUSING
OPPORTUNITY