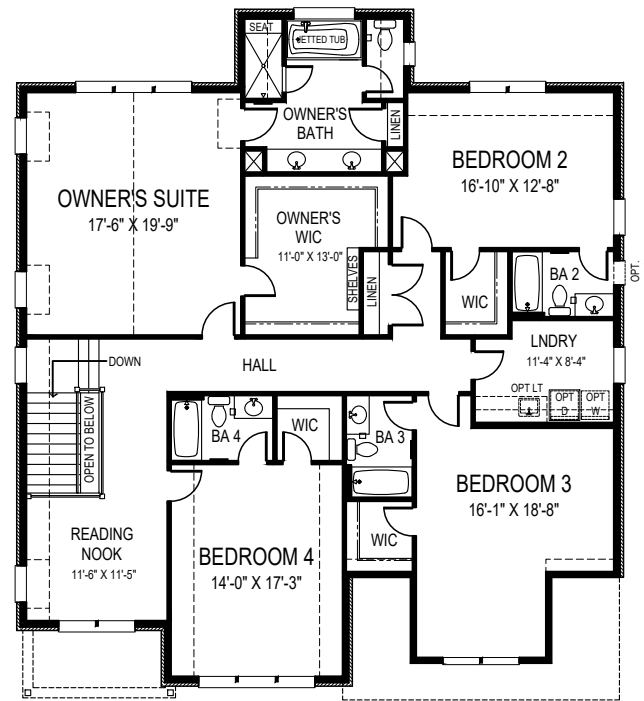


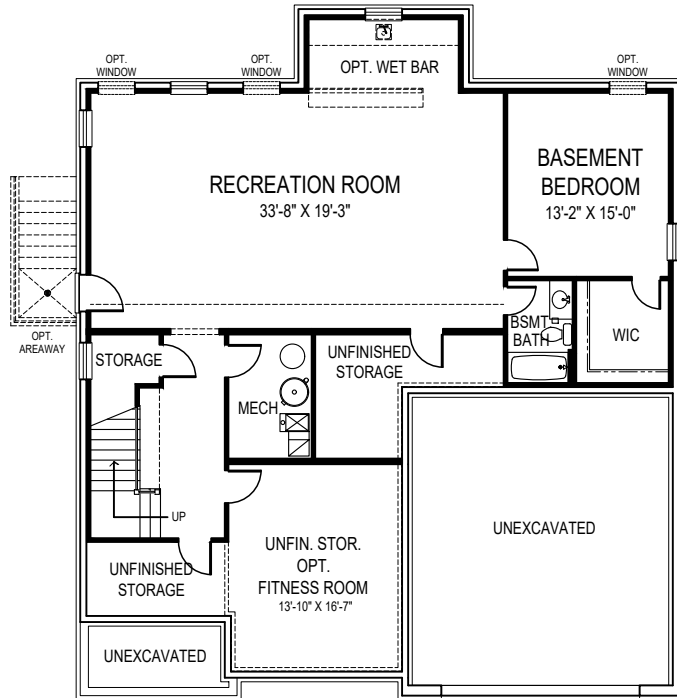


CEILING HEIGHTS: 9'10"/9'  
 OPTIONAL FOUR SIDES PAINTED BRICK (SHOWN)  
 STANDARD - SIDING & STONE

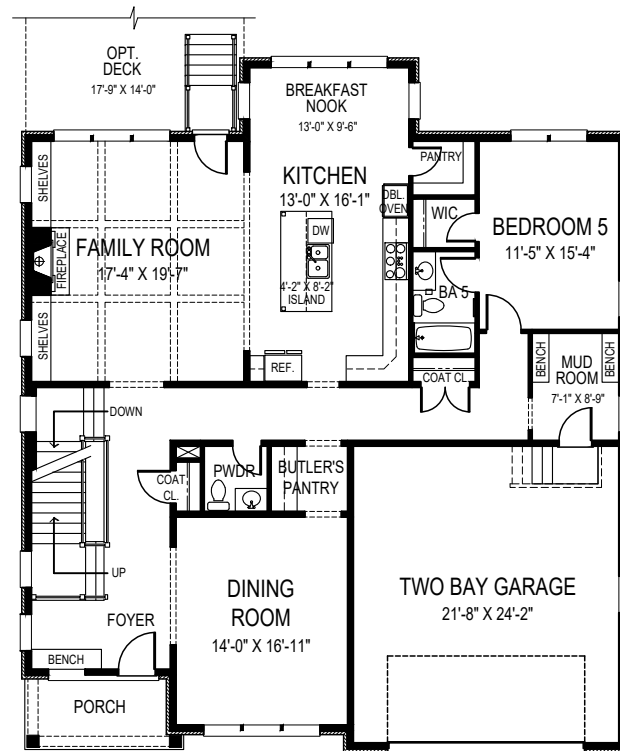
OPTIONAL SIDE ENTRY  
 GARAGE AVAILABLE



SECOND FLOOR PLAN



BASEMENT PLAN



FIRST FLOOR PLAN



**FOCAL POINT  
 HOMES**

# TALMADGE

49'-6" wide x 56'-8" deep  
 6 BR 6-1/2 BA

## FLOOR AREA

FIRST FLOOR	1887 S.F.
SECOND FLOOR	2292 S.F.
<hr/>	
ABOVE GRADE FINISHED SPACE	4179 S.F.
FINISHED BASEMENT SPACE	1360 S.F.
TOTAL FINISHED SPACE	5539 S.F.
<hr/>	
OPT. FITNESS ROOM	265 S.F.
TOTAL FINISHABLE AREA	5804 S.F.

Specification and plans are provided for illustrative purposes only and are subject to change, modification and/or substitution without notice. April 8, 2024

