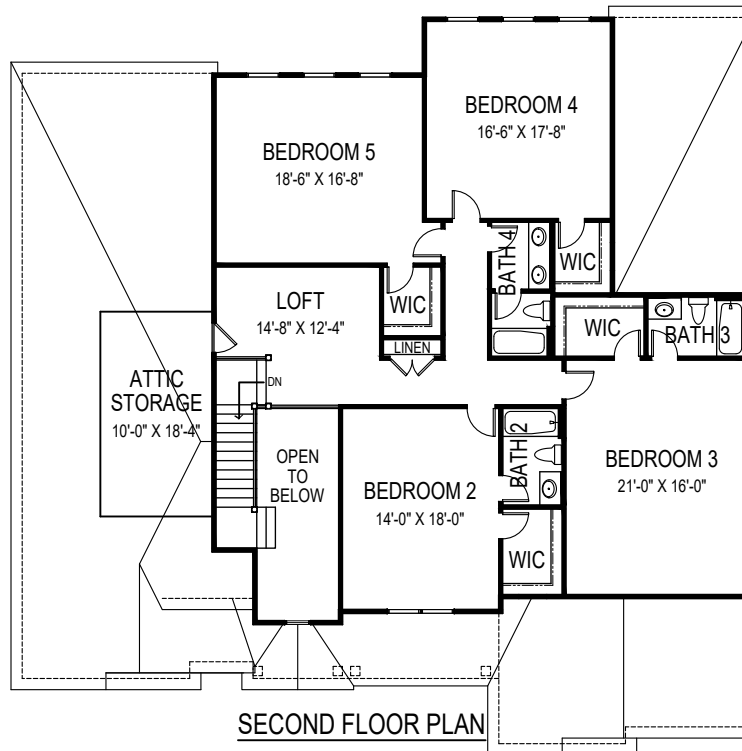




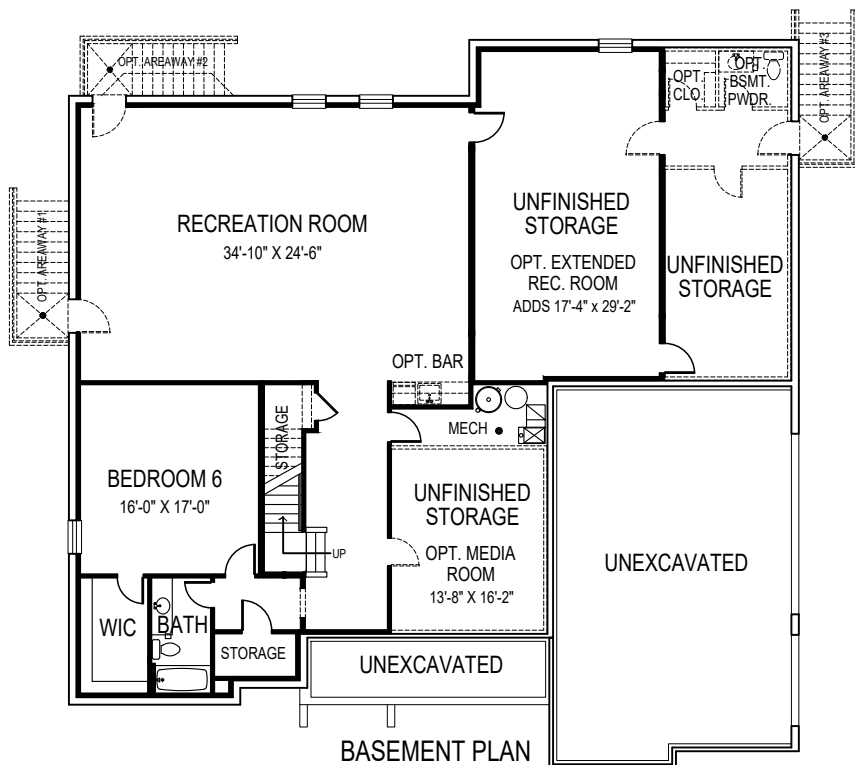
CEILING HEIGHTS 9'10"/9'

OPTIONAL FRONT ENTRY GARAGE AVAILABLE

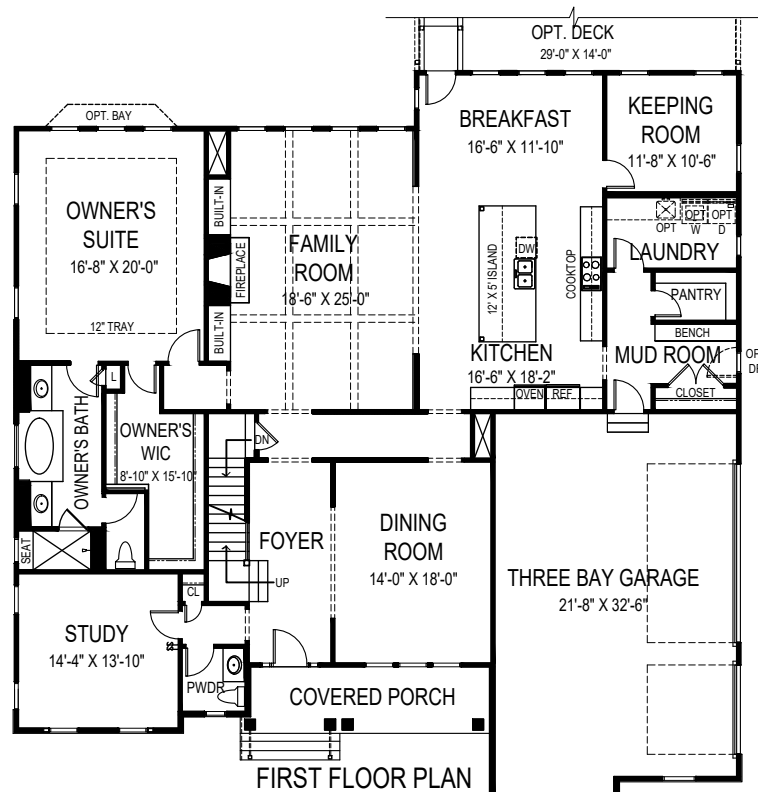
OPTIONAL 2ND FLOOR OWNER'S SUITE AVAILABLE



SECOND FLOOR PLAN



BASEMENT PLAN



FIRST FLOOR PLAN



**FOCAL POINT
HOMES**

MIRIAM

65'-4" wide x 65'-2" deep
6 BR 5½ BA

FLOOR AREA

FIRST FLOOR	2942 S.F.
SECOND FLOOR	1935 S.F.
ABOVE GRADE FINISHED SPACE	4877 S.F.
FINISHED BASEMENT SPACE	1667 S.F.
TOTAL FINISHED SPACE	6544 S.F.
OPTIONAL MEDIA ROOM	236 S.F.
OPTIONAL EXTENDED REC ROOM	510 S.F.
OPTIONAL BSMT. PWDR. BATH	183 S.F.
TOTAL FINISHABLE AREA	7473 S.F.

Specification and plans are provided for illustrative purposes only and are subject to change, modification and/or substitution without notice. April 8, 2024



EQUAL HOUSING
OPPORTUNITY