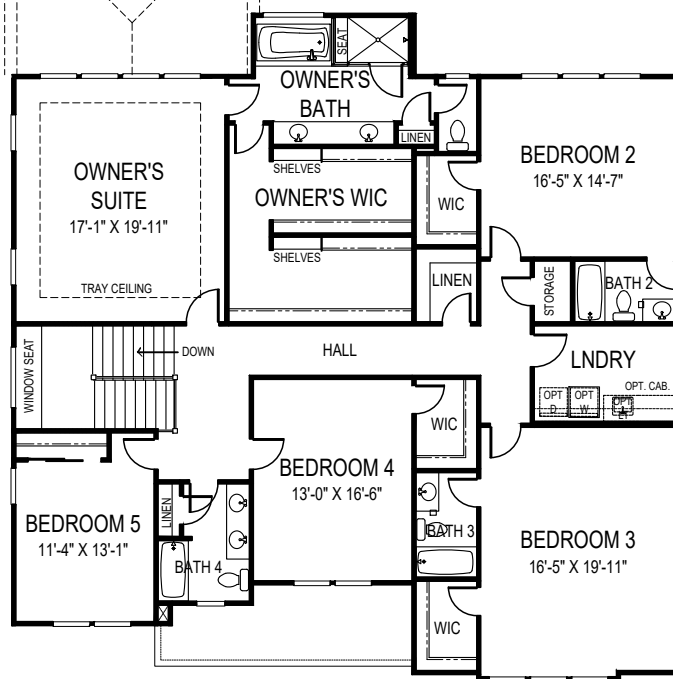
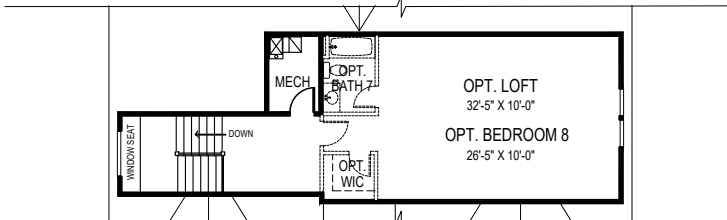




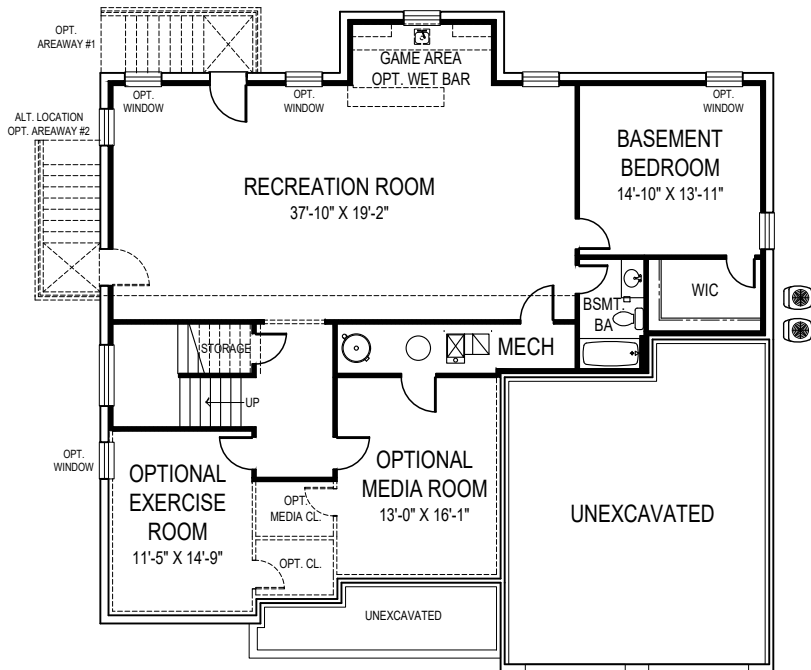
CEILING HEIGHTS: 9'10"/9"  
 OPTIONAL BRICK ELEVATION AVAILABLE  
 OPTIONAL SIDE ENTRY GARAGE AVAILABLE



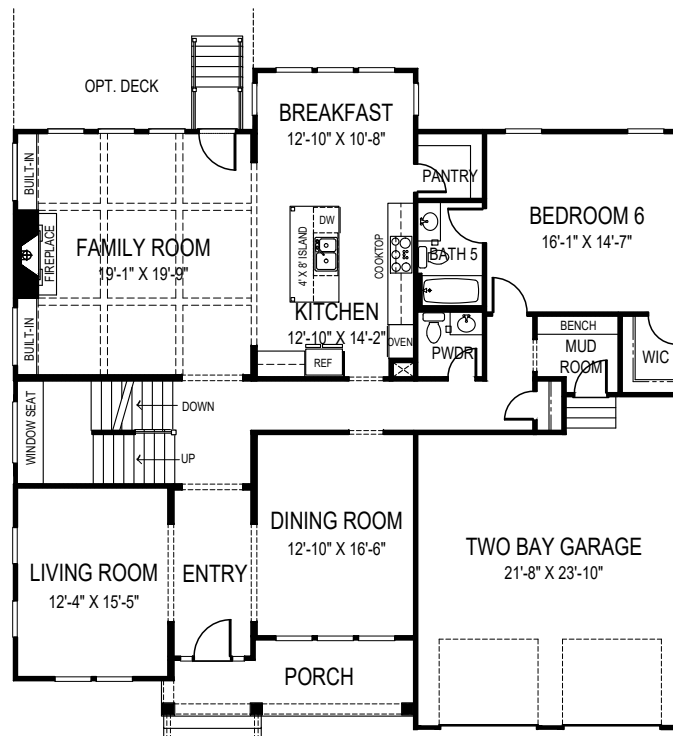
SECOND FLOOR PLAN



OPTIONAL THIRD FLOOR PLAN



BASEMENT PLAN



FIRST FLOOR PLAN



**FOCAL POINT**  
 HOMES

# MAXWELL

55' 4" wide x 54' 4" deep  
 7 BR 6 1/2 BA

## FLOOR AREA

FIRST FLOOR	1936 S.F.
SECOND FLOOR	2505 S.F.
ABOVE GRADE FINISHED SPACE	4441 S.F.
FINISHED BASEMENT SPACE	1369 S.F.
TOTAL FINISHED SPACE	5810 S.F.
OPT. THIRD FLOOR	782 S.F.
OPT. EXERCISE ROOM	216 S.F.
OPT. MEDIA ROOM	280 S.F.
TOTAL FINISHABLE AREA	7088 S.F.

Specification and plans are provided for illustrative purposes only and are subject to change, modification and/or substitution without notice. April 8, 2024



EQUAL HOUSING OPPORTUNITY