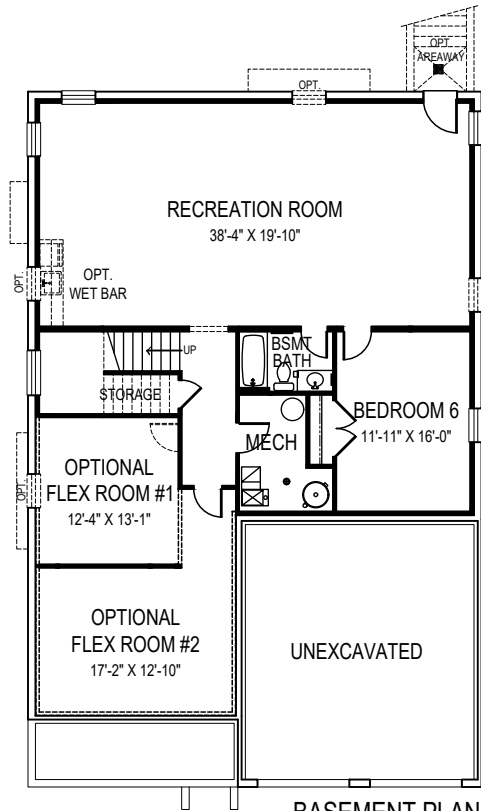


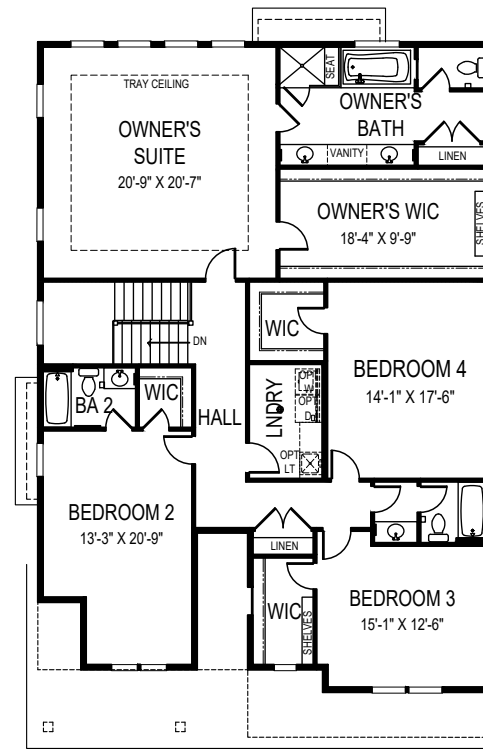


CEILINGS HEIGHTS: 9'9"/8'

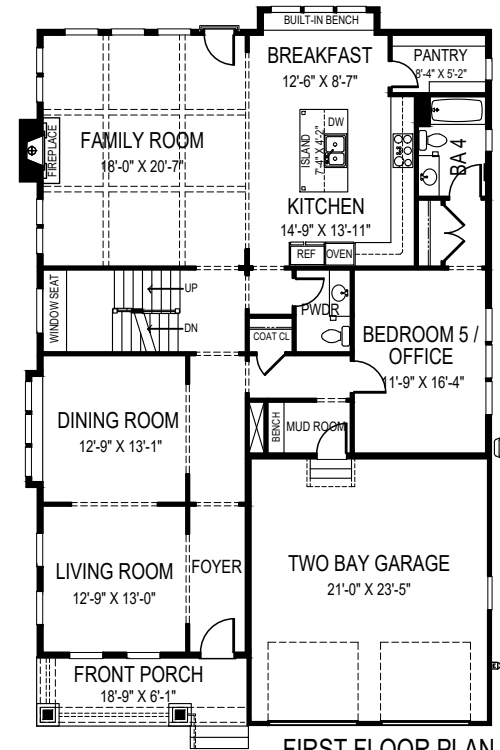
OPTIONAL SIDE ENTRY  
GARAGE AVAILABLE



BASEMENT PLAN



SECOND FLOOR PLAN



FIRST FLOOR PLAN



**FOCAL POINT**  
HOMES

# JULIA

40'-4" wide x 60'-10" deep  
6 BR 5 1/2 BA

## FLOOR AREA

FIRST FLOOR	1914 S.F.
SECOND FLOOR	2204 S.F.
ABOVE GRADE FINISHED SPACE	4118 S.F.
FINISHED BASEMENT SPACE	1246 S.F.
TOTAL FINISHED SPACE	5364 S.F.
OPTIONAL FLEX ROOM	172 S.F.
OPTIONAL MEDIA ROOM	269 S.F.
TOTAL FINISHABLE AREA	5805 S.F.

Specification and plans are provided for illustrative purposes only and are subject to change, modification and/or substitution without notice. April 8, 2024



EQUAL HOUSING  
OPPORTUNITY