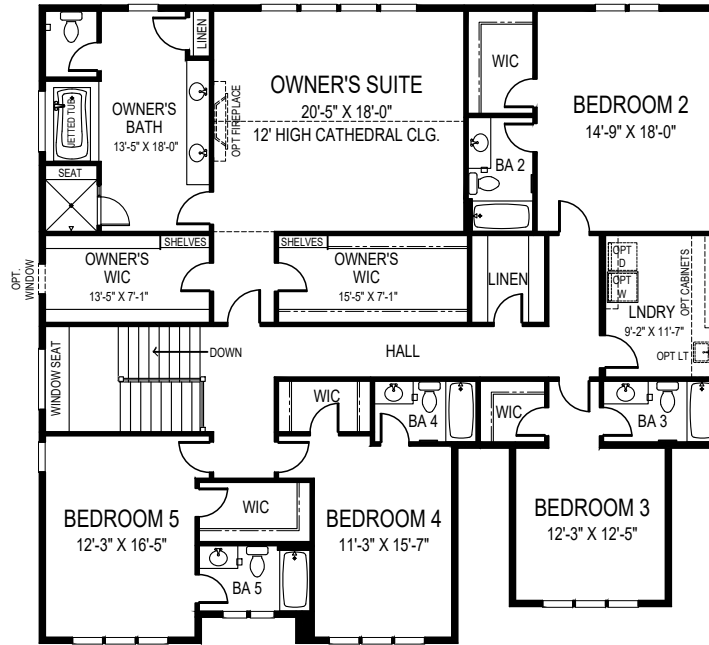


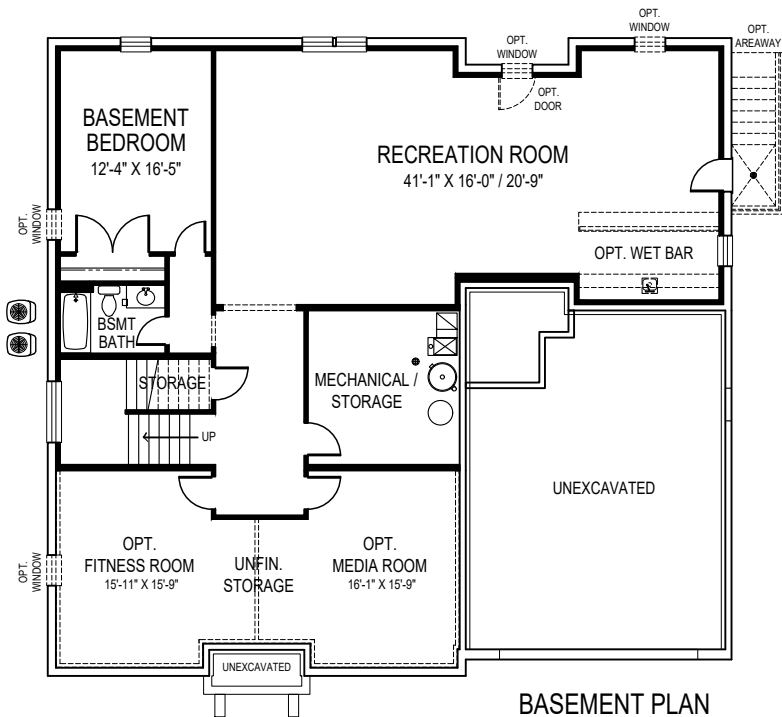


CEILING HEIGHTS: 9'/10'/9"

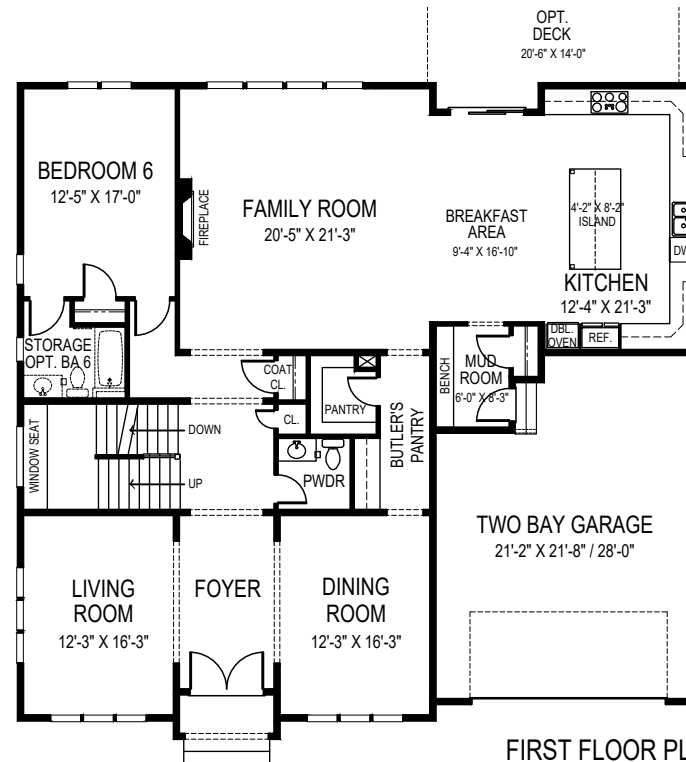
OPTIONAL SIDE ENTRY GARAGE AVAILABLE



SECOND FLOOR PLAN



BASEMENT PLAN



FIRST FLOOR PLAN



FOCAL POINT
HOMES

HAYES A

55'-9" wide x 53'-6" deep
7 BR 6-1/2 BA

FLOOR AREA

FIRST FLOOR	2265 S.F.
SECOND FLOOR	2708 S.F.
ABOVE GRADE FINISHED SPACE	4973 S.F.
FINISHED BASEMENT SPACE	1512 S.F.
TOTAL FINISHED SPACE	6485 S.F.
OPT. FITNESS ROOM	263 S.F.
OPT. MEDIA ROOM	267 S.F.
TOTAL FINISHABLE AREA	7015 S.F.

Specification and plans are provided for illustrative purposes only and are subject to change, modification and/or substitution without notice. April 8, 2024



EQUAL HOUSING OPPORTUNITY