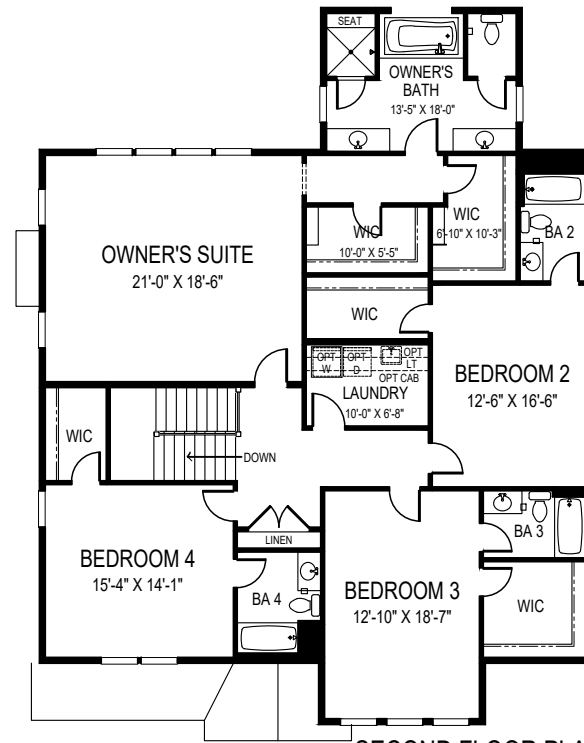


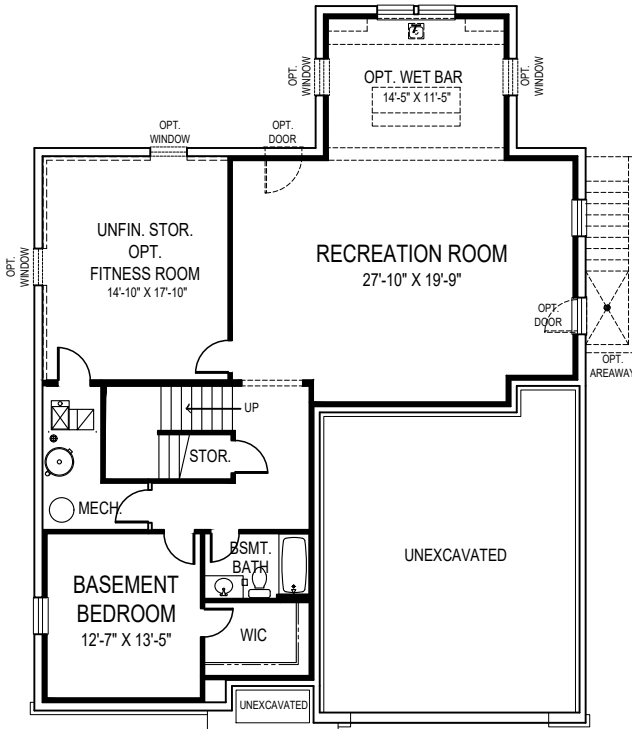


CEILING HEIGHTS: 9'10"/9'

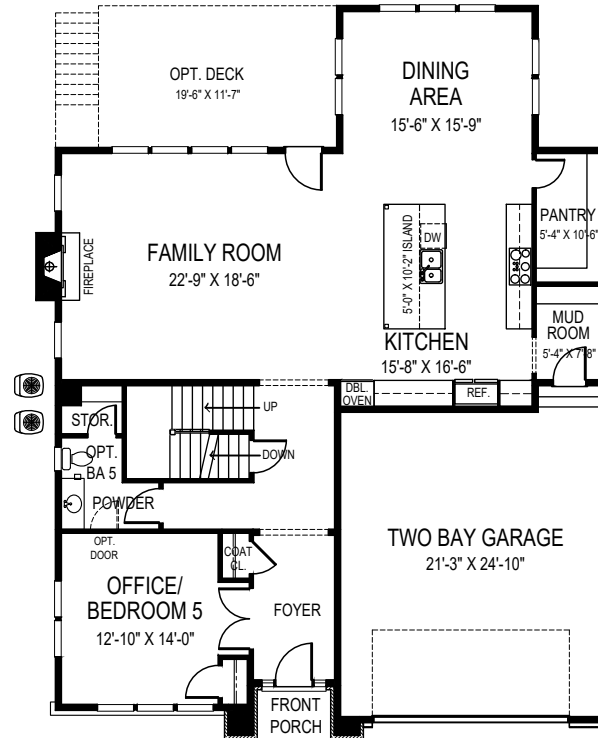
OPTIONAL SIDE ENTRY
GARAGE AVAILABLE



SECOND FLOOR PLAN



BASEMENT PLAN



FIRST FLOOR PLAN



FOCAL POINT
HOMES

HANNAH

45'-0" wide x 58'-6" deep
5 BR 5-1/2 BA

FLOOR AREA

FIRST FLOOR	1701 S.F.
SECOND FLOOR	2144 S.F.
ABOVE GRADE FINISHED SPACE	3845 S.F.
FINISHED BASEMENT SPACE	1320 S.F.
TOTAL FINISHED SPACE	5165 S.F.
OPT. FITNESS ROOM	303 S.F.
TOTAL FINISHABLE AREA	5468 S.F.

Specification and plans are provided for illustrative purposes only and are subject to change, modification and/or substitution without notice. April 8, 2024



EQUAL HOUSING
OPPORTUNITY