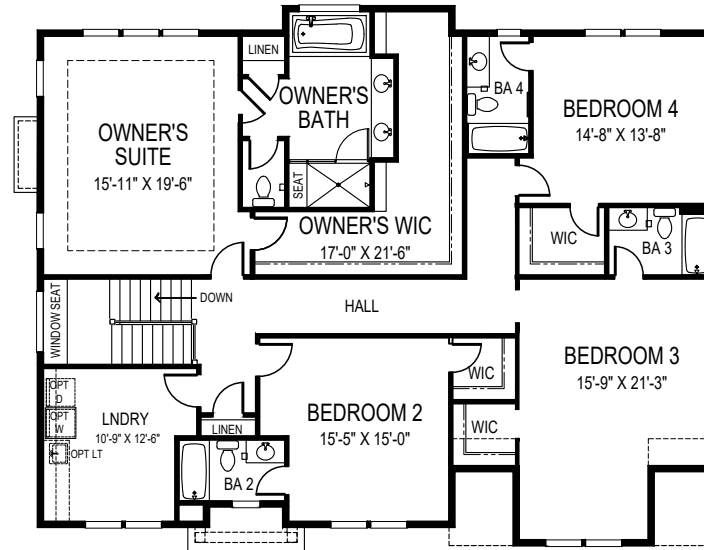




CEILING HEIGHTS: STANDARD 9'9"/8"
OPTIONAL 9'10"/9"

OPTIONAL SIDE ENTRY
GARAGE AVAILABLE



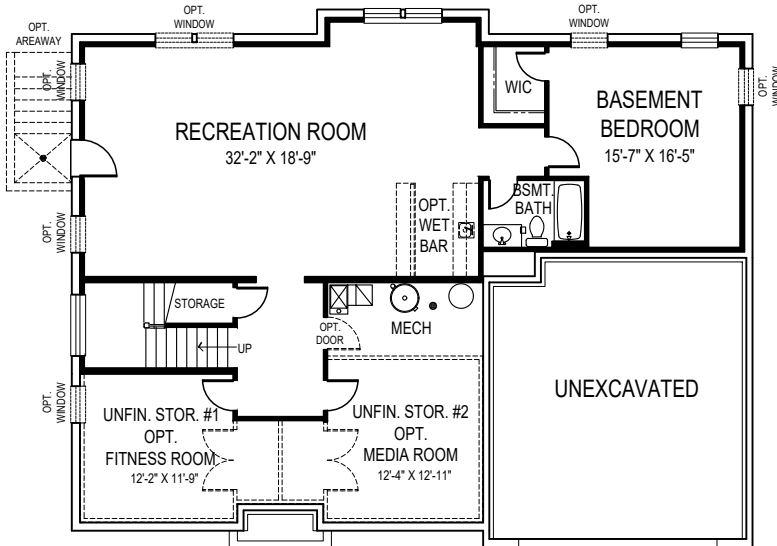
SECOND FLOOR PLAN



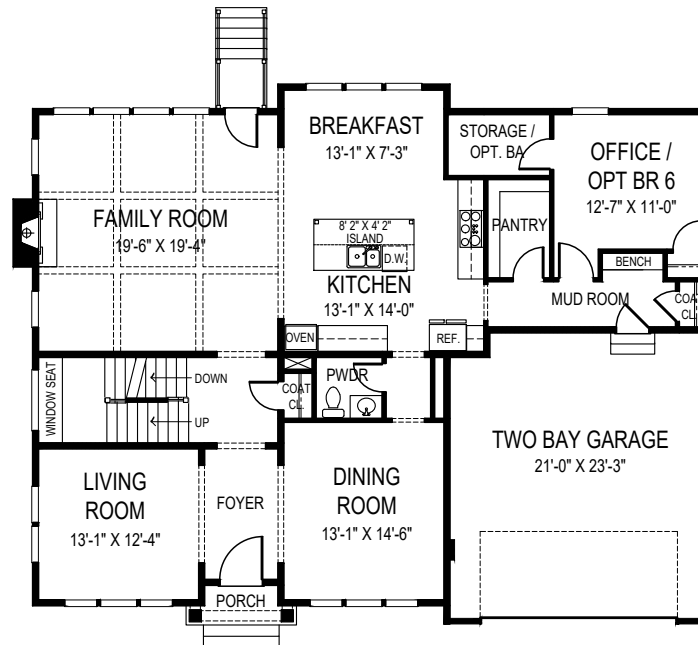
**FOCAL POINT
HOMES**

ELAINA

55'-6" wide x 44'-0" deep
6 BR 5-1/2 BA



BASEMENT PLAN



FIRST FLOOR PLAN

FLOOR AREA

FIRST FLOOR	1794 S.F.
SECOND FLOOR	2237 S.F.
ABOVE GRADE FINISHED SPACE	4031 S.F.
FINISHED BASEMENT SPACE	1302 S.F.
TOTAL FINISHED SPACE	5333 S.F.
OPT. FITNESS ROOM	198 S.F.
OPT. MEDIA ROOM	218 S.F.
TOTAL FINISHABLE AREA	5749 S.F.

Specification and plans are provided for illustrative purposes only and are subject to change, modification and/or substitution without notice. April 8, 2024



EQUAL HOUSING
OPPORTUNITY