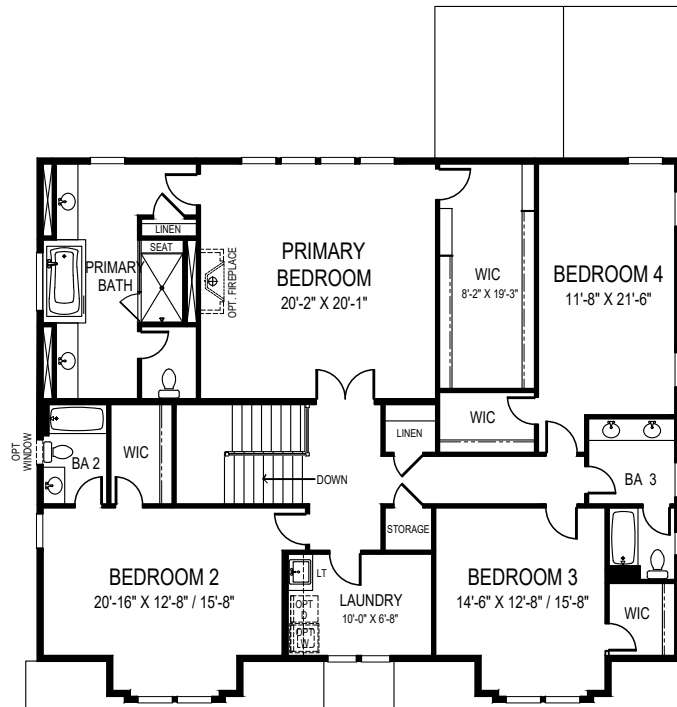


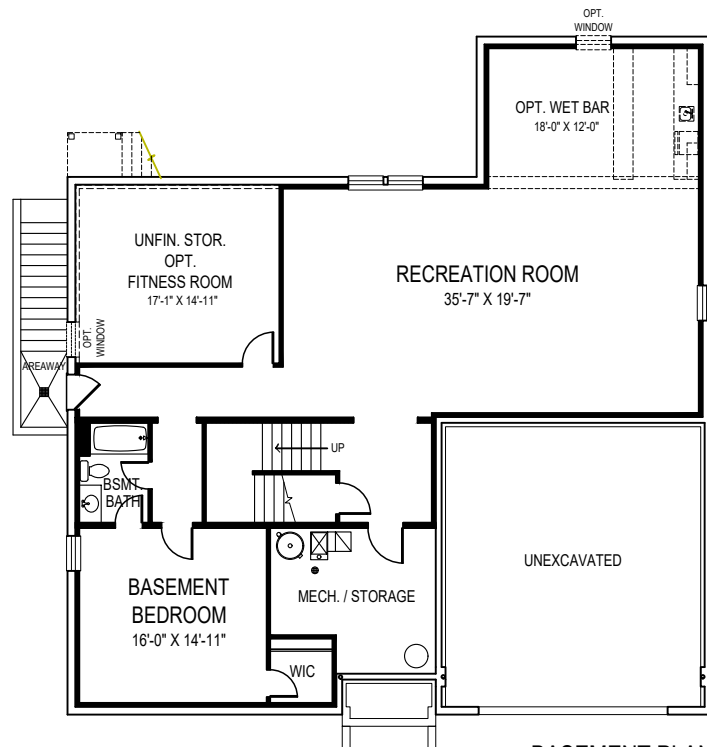


CEILING HEIGHTS 9'10"/9'

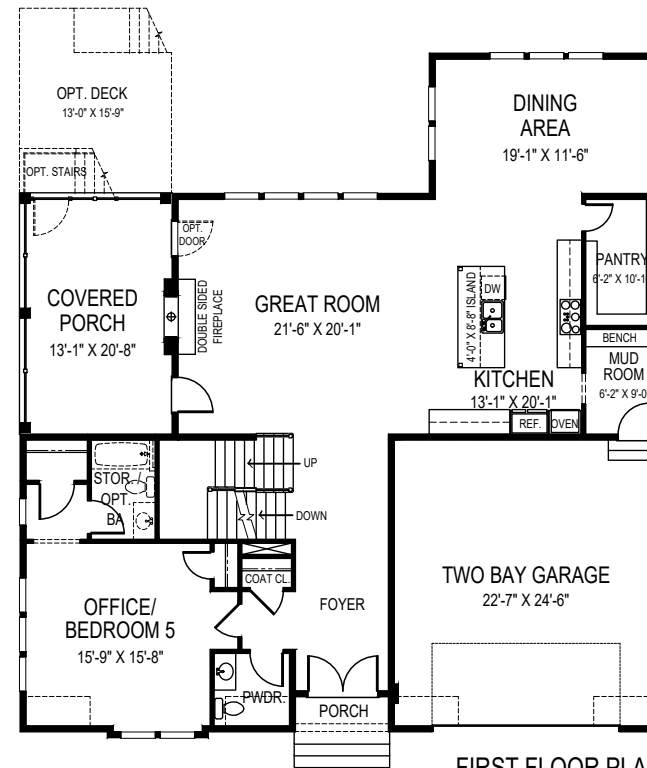
OPTIONAL SIDE ENTRY GARAGE AVAILABLE



SECOND FLOOR PLAN



BASEMENT PLAN



FIRST FLOOR PLAN



**FOCAL POINT
HOMES**

DAVIS

55'-0" wide x 58'-0" deep
6 BR 4-1/2 BA

FLOOR AREA

FIRST FLOOR	1911 S.F.
SECOND FLOOR	2443 S.F.
ABOVE GRADE FINISHED SPACE	4354 S.F.
FINISHED BASEMENT SPACE	1706 S.F.
TOTAL FINISHED SPACE	6060 S.F.
OPT. FITNESS ROOM	276 S.F.
TOTAL FINISHABLE AREA	6336 S.F.

Specification and plans are provided for illustrative purposes only and are subject to change, modification and/or substitution without notice. April 8, 2024



EQUAL HOUSING OPPORTUNITY