

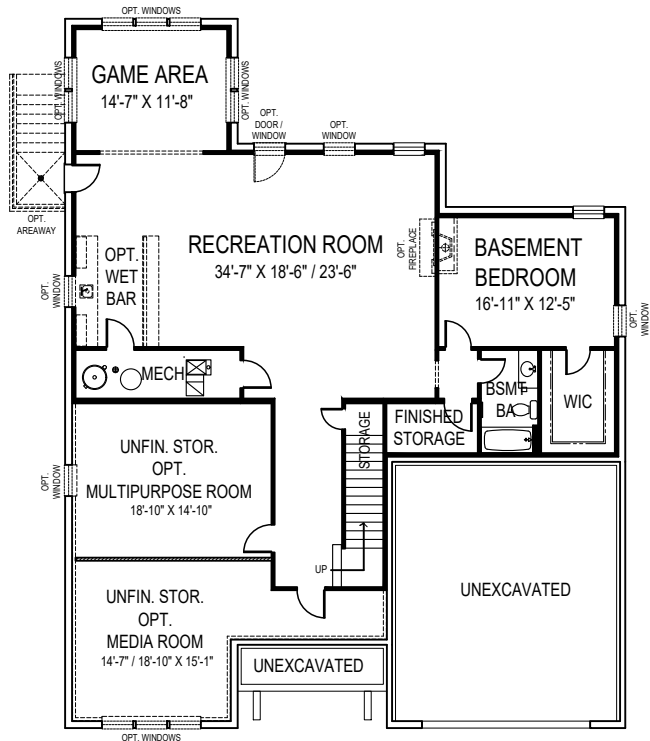


CEILING HEIGHTS: 9'/10'/9'

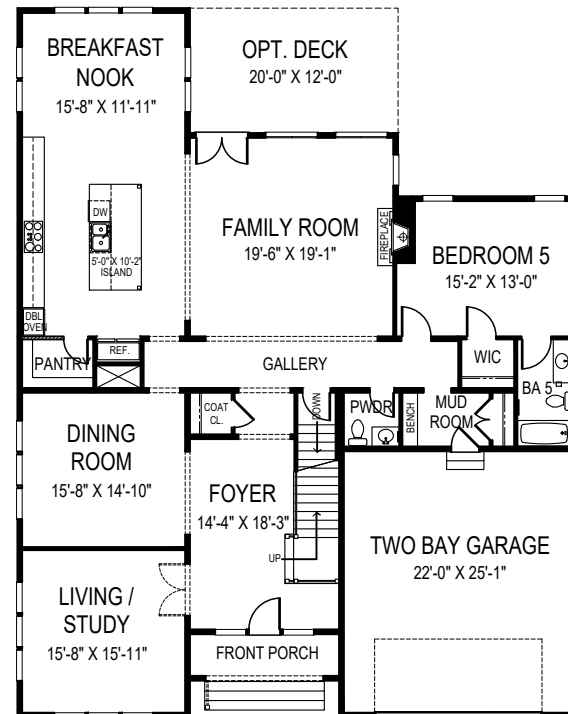
OPTIONAL SIDE ENTRY
GARAGE AVAILABLE



SECOND FLOOR PLAN



BASEMENT PLAN



FIRST FLOOR PLAN



**FOCAL POINT
HOMES**

CAMILLE

53'-10" wide x 68'-2" deep
6 BR 6-1/2 BA

FLOOR AREA

FIRST FLOOR	2425 S.F.
SECOND FLOOR	2273 S.F.
ABOVE GRADE FINISHED SPACE	4698 S.F.
FINISHED BASEMENT SPACE	1685 S.F.
TOTAL FINISHED SPACE	6383 S.F.
OPT. MULTIPURPOSE ROOM	300 S.F.
OPT. MEDIA ROOM	354 S.F.
TOTAL FINISHABLE AREA	7037 S.F.

Specification and plans are provided for illustrative purposes only and are subject to change, modification and/or substitution without notice. April 8, 2024



EQUAL HOUSING
OPPORTUNITY