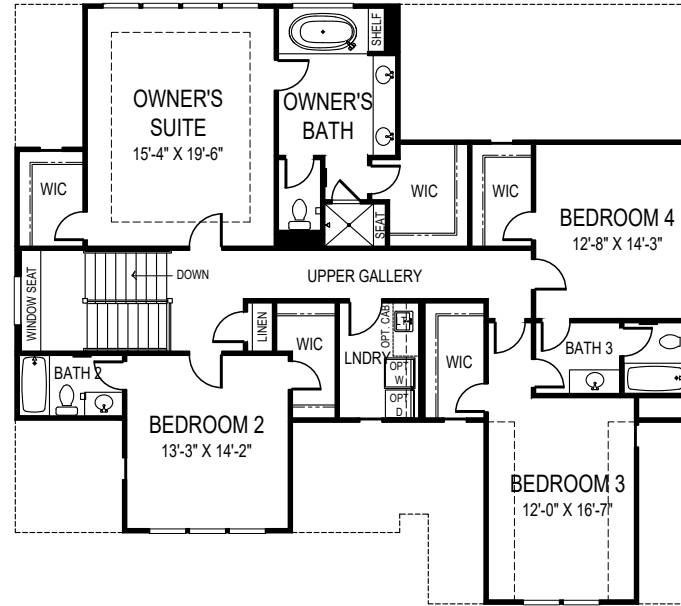


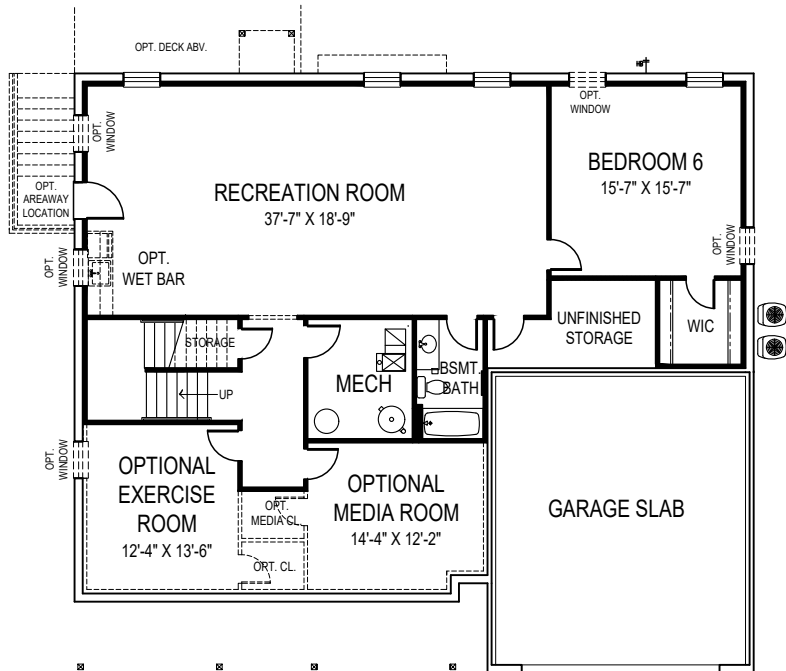


CEILING HEIGHTS:  
9'9"/8'

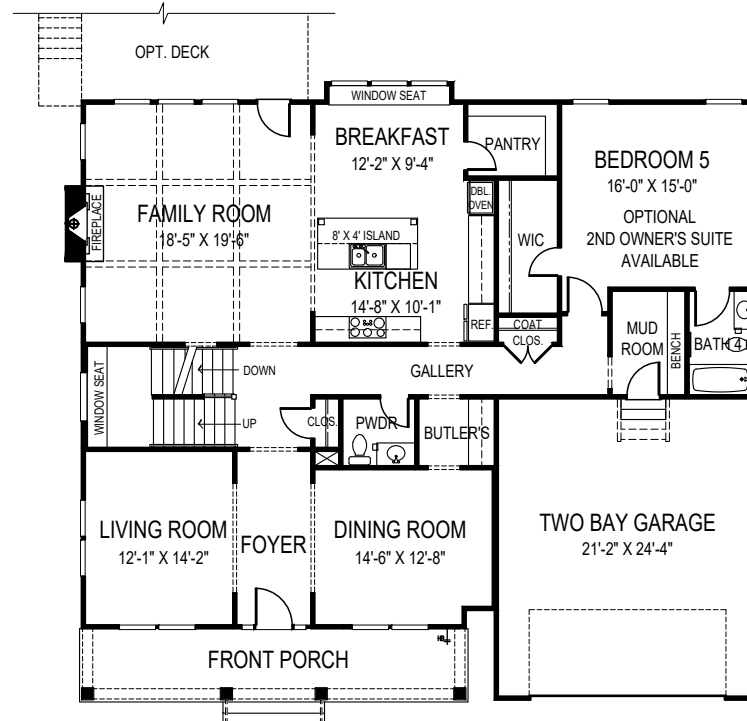
OPTIONAL SIDE ENTRY  
GARAGE AVAILABLE



SECOND FLOOR PLAN



BASEMENT PLAN



FIRST FLOOR PLAN



**FOCAL POINT  
HOMES**

# BROOKE

55' 8" wide x 49' 4" deep  
6 BR 5 1/2 BA

## FLOOR AREA

FIRST FLOOR	1920 S.F.
SECOND FLOOR	1791 S.F.
ABOVE GRADE FINISHED SPACE	3711 S.F.
FINISHED BASEMENT SPACE	1317 S.F.
TOTAL FINISHED SPACE	5028 S.F.
OPT. EXERCISE ROOM	202 S.F.
OPT. MEDIA ROOM	202 S.F.
OPT. EXTENDED BEDROOM #3	51 S.F.
TOTAL FINISHABLE AREA	5483 S.F.

Specification and plans are provided for illustrative purposes only and are subject to change, modification and/or substitution without notice. April 8, 2024



EQUAL HOUSING  
OPPORTUNITY