



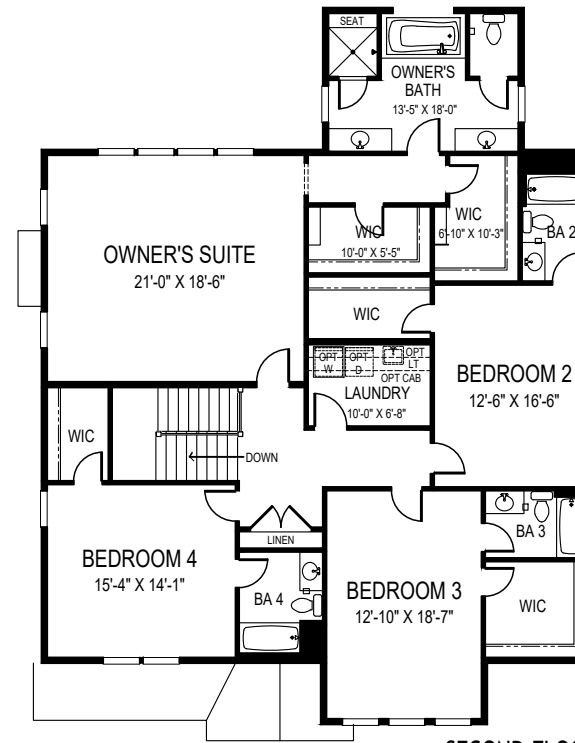
# THE HANNAH

45'-0" wide x 58'-6" deep  
5 BR 5-1/2 BA



CEILING HEIGHTS: 9'/10'/9'

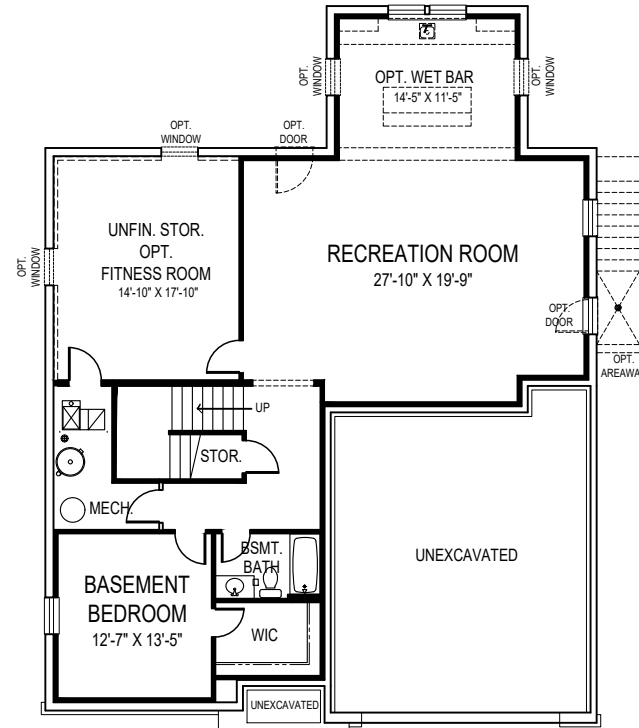
OPTIONAL SIDE ENTRY  
GARAGE AVAILABLE



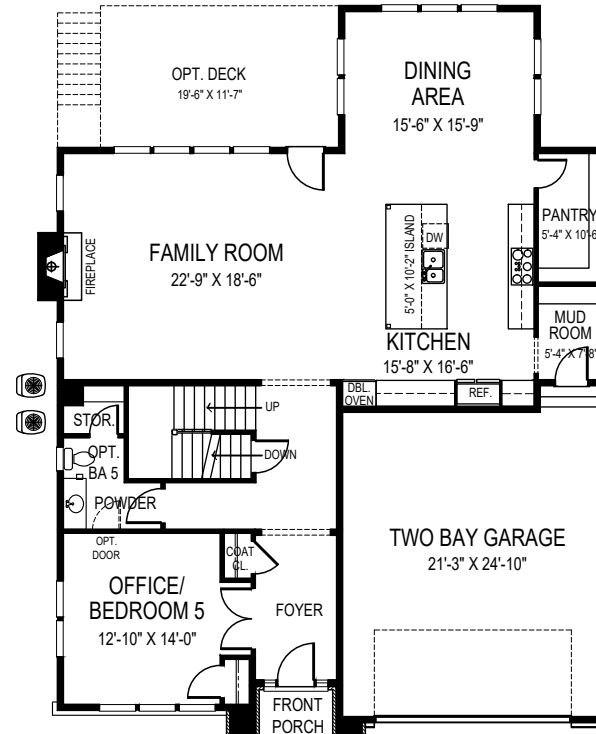
**SECOND FLOOR PLAN**

## FLOOR AREA

FIRST FLOOR	1701 S.F.
SECOND FLOOR	2144 S.F.
ABOVE GRADE FINISHED SPACE	3845 S.F.
FINISHED BASEMENT SPACE	1320 S.F.
TOTAL FINISHED SPACE	5165 S.F.
OPT. FITNESS ROOM	303 S.F.
TOTAL FINISHABLE AREA	5468 S.F.



**BASEMENT PLAN**



**FIRST FLOOR PLAN**

Specification and plans are provided for illustrative purposes only and are subject to change, modification and/or substitution without notice. October 24, 2022

