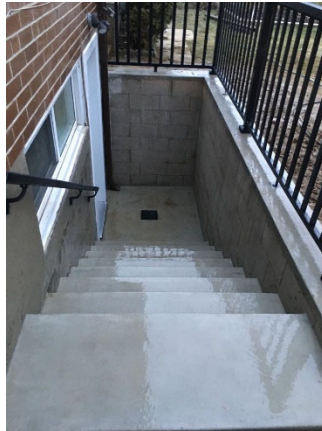




FOCAL POINT H O M E S

Areaway & Window Well Drains

- It is essential that your areaway and window well drains remain clear of debris to prevent potential water damage inside your home. Your areaway drain is connected to your sump pump which ensures that excessive water around your foundation is cleared from the area and does not enter your home.
- Keep the drain that is located in the center of your areaway clear of leaves, grass, dirt, and other obstructions. This will allow rainfall to properly drain to the sump and be expelled away from your home's foundation.



- If you notice water ponding in your areaway or window wells, you will need to have this drain(s) inspected by a qualified plumber to dislodge any debris that may be clogging the pipe(s).
- When heavy snowfall is in the forecast, a good preventive measure is to cover your window wells with a tarp or covering to prevent excessive snow accumulation from forming in the well. Without this, the snow accumulation could freeze and cause potential damage to the window located in the well.
- Snowfall should also be kept clear from the areaway landing so that water can pass freely to the sump pump once the snow thaws.