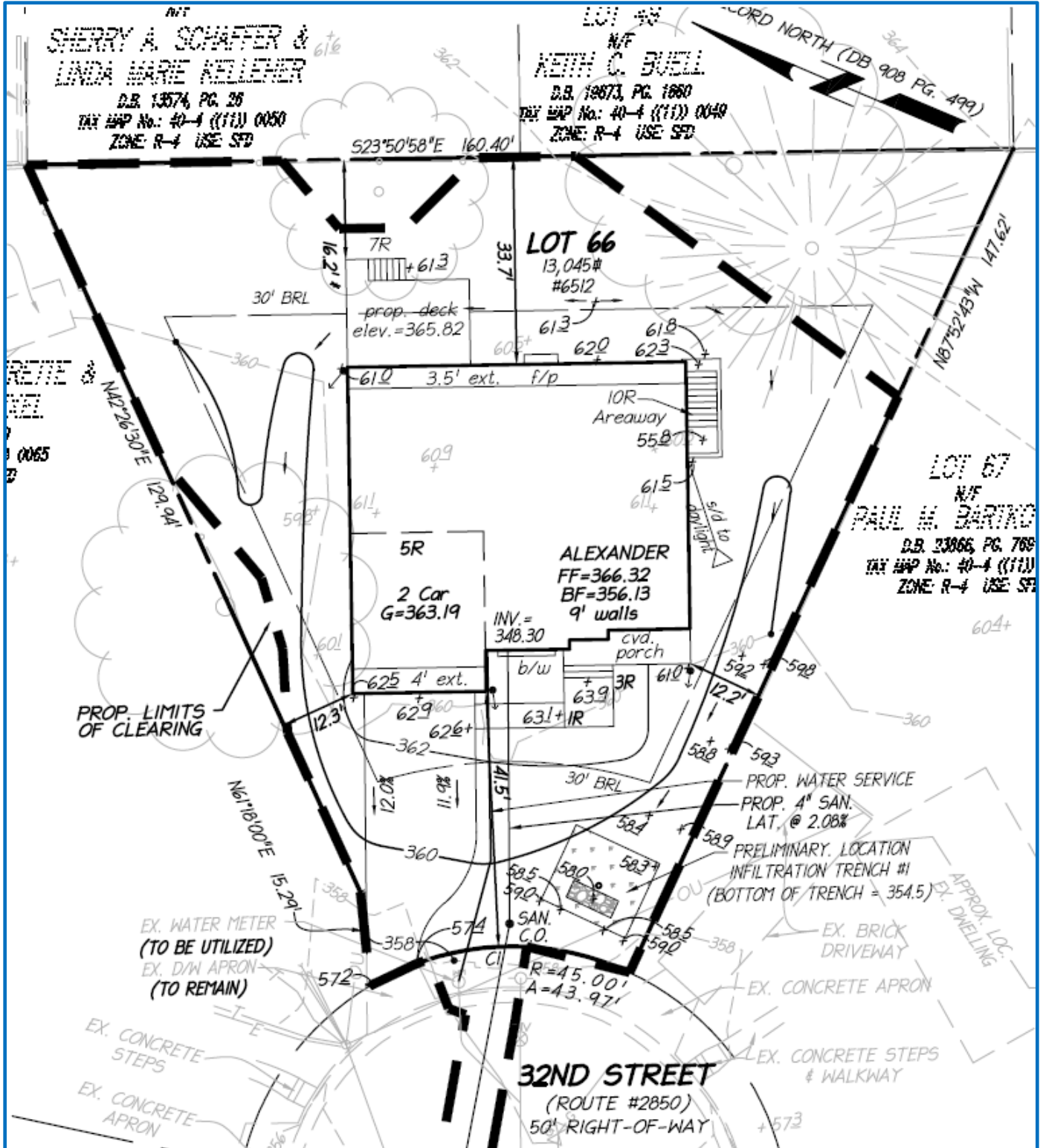


6512 32nd Street, Falls Church - Draft Site Plan

(Subject to Change)

Updated 2/22/2019



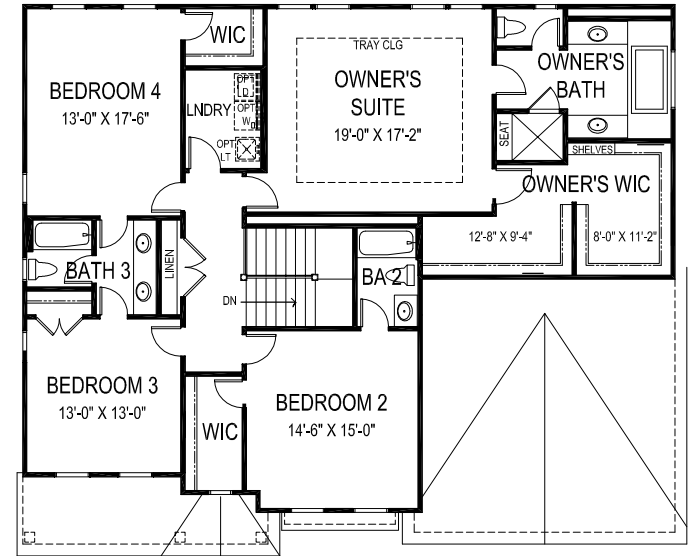


THE ALEXANDER

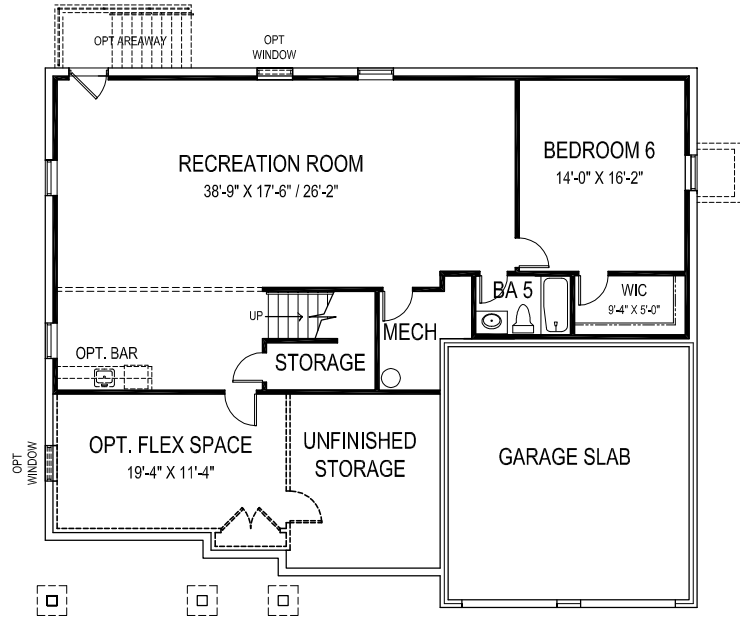
55' wide x 45'-6" deep
6 BR 5 1/2 BA



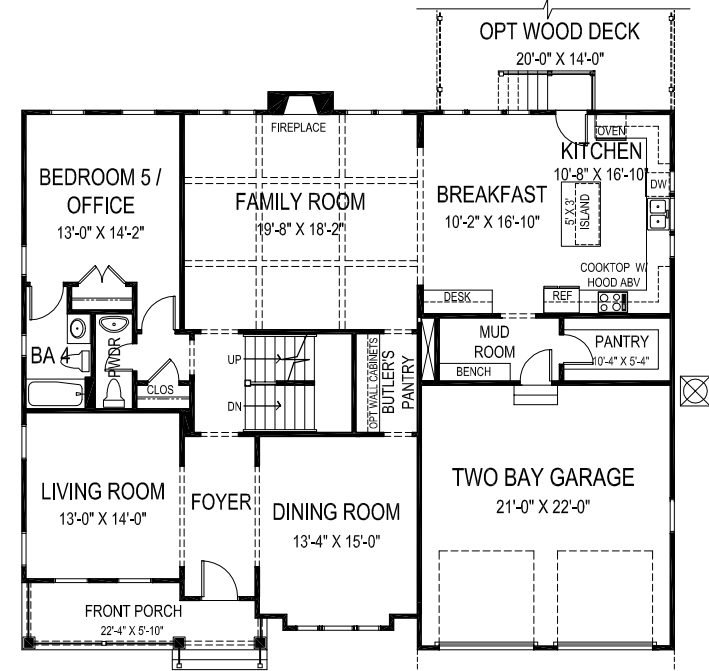
OPTIONAL SIDE ENTRY
GARAGE AVAILABLE



SECOND FLOOR PLAN



BASEMENT PLAN



FIRST FLOOR PLAN

FLOOR AREA

FIRST FLOOR	1907 S.F.
SECOND FLOOR	1886 S.F.
ABOVE GRADE FINISHED SPACE	3793 S.F.
FINISHED BASEMENT SPACE	1283 S.F.
TOTAL FINISHED SPACE	5076 S.F.
OPTIONAL FLEX ROOM	243 S.F.
TOTAL FINISHABLE AREA	5319 S.F.

Specification and plans are provided for illustrative purposes only and are subject to change, modification and/or substitution without notice. May 16, 2016

